

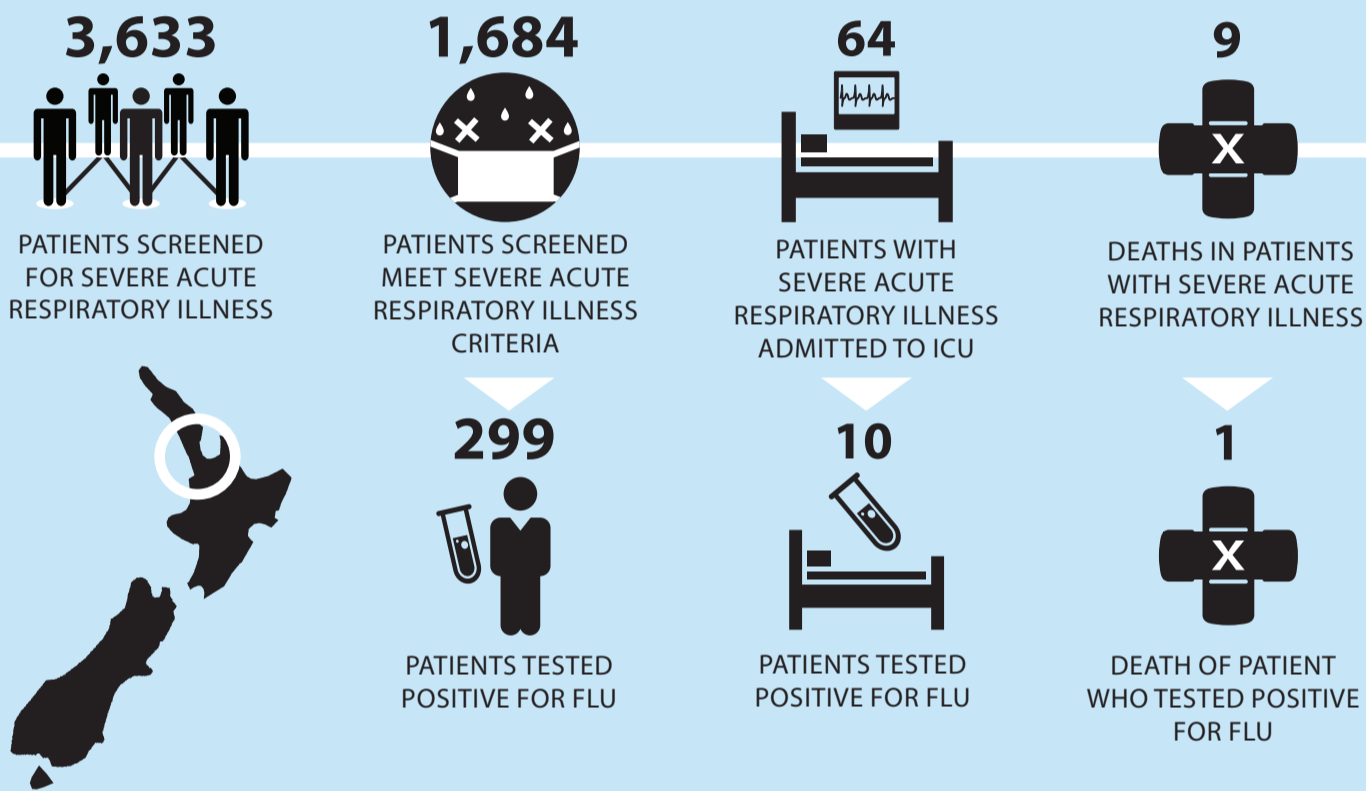
# THE SHIVERS PROJECT

SOUTHERN HEMISPHERE INFLUENZA VACCINE EFFECTIVENESS, RESEARCH & SURVEILLANCE

A CDC five-year, multi-million dollar study TO STUDY INFLUENZA IN AN EFFORT TO BETTER UNDERSTAND **THE BURDEN OF THE VIRUS** and how to prevent its spread around the world

## IMPACT OF SEVERE ACUTE RESPIRATORY INFECTIONS (SARI) CAUSED BY INFLUENZA VIRUSES AND OTHER RESPIRATORY PATHOGENS ON HOSPITALISATIONS IN AUCKLAND

### THE BURDEN OF FLU IN AUCKLAND HOSPITALS



## YEAR ONE 2012

OVERVIEW OF PRELIMINARY FINDINGS

**HIGH NUMBERS OF PEOPLE HOSPITALISED** with respiratory illness tested positive for **INFLUENZA VIRUS INFECTIONS**

**UNDER FOURS AND OVER 80s HARDEST HIT** with influenza hospitalisation

**PACIFIC ISLAND AND MĀORI** HAVE HIGH RATE of hospitalisation from flu

**SUBSTANTIAL NUMBERS OF HOSPITALISATIONS** with severe acute respiratory infections WERE CAUSED BY OTHER RESPIRATORY VIRUSES

**A(H1N1)** viruses dominant Auckland **June/July 2012** **A(H3N2)** viruses dominant Auckland **August/September 2012** **A(H3N2)** viruses dominant across the rest of New Zealand **June/September 2012**

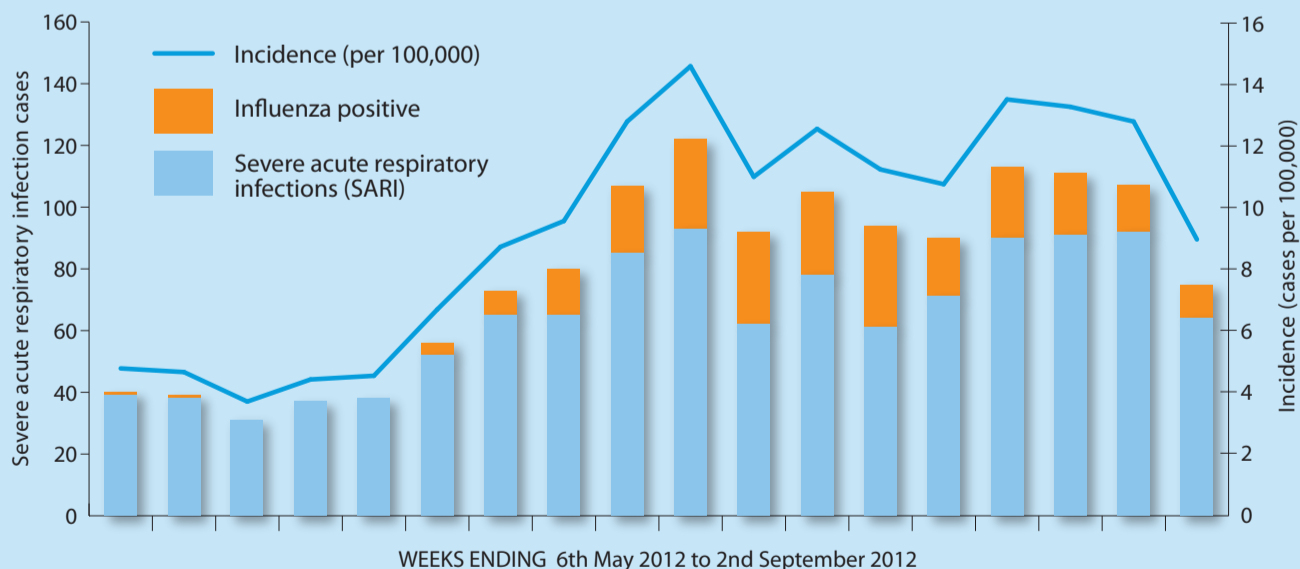


IF **NORTHERN HEMISPHERE** follows same pattern of **A(H3N2)** viruses predominating, then flu hospitalisation rates may be substantial for the **very old and very young**

**FINDINGS SUPPORT BOOSTING VACCINATION rates to protect most vulnerable to flu**

The flu viruses circulating in New Zealand **CHANGED THROUGHOUT THE WINTER** and new vaccine strains have been selected TO BETTER MATCH CURRENTLY CIRCULATING VIRUSES

### WINTER INCIDENCE OF SEVERE ACUTE RESPIRATORY ILLNESS



### WHY NEW ZEALAND IS PERFECT

New Zealand is situated well below the Tropic of Capricorn with a flu season during the Northern Hemisphere summer, so our flu season often predicts what will happen during the Northern Hemisphere winter. With our highly effective National Influenza Surveillance System and comprehensive computerised health system, the SHIVERS study team has an excellent platform to conduct scientific research and surveillance using data from hospitals, labs and GPs working in the community. Our response to the (H1N1) 2009 'Swine Flu' was internationally recognised as 'best in class' and we have assembled a highly collaborative multi-disciplinary, multi-centre scientific team to make SHIVERS a reality.



The Institute of Environmental Science and Research

ESR provides science advice and services to government agencies, local authorities and the private sector

