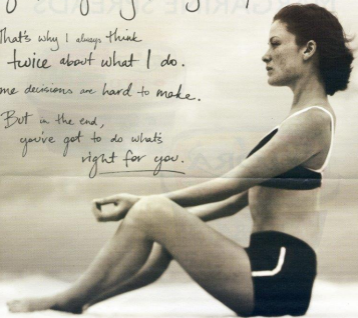


I wouldn't put  
just anything in my body.

That's why I always think  
twice about what I do.  
Some decisions are hard to make.

But in the end,  
you've got to do what's  
right for you.



**Panadol**  
It's my choice

PANADOL® contains paracetamol 500mg. Always read the label. Use only as directed. Do not exceed the recommended daily dose. If symptoms persist or you have side effects see your healthcare professional. Always consult your doctor or pharmacist. If you take Panadol or other pain-relievers with other regular medications, increased care should be taken. Use for the relief of pain and/or fever. Precautions: Allergy to paracetamol. Liver or kidney disease. Side effects: Allergic reactions or skin rashes are rare. GlaxoSmithKline Consumer Healthcare, Auckland. PANADOL® is a registered trade mark of the GlaxoSmithKline group of companies. 0800 993758.